

Broad St. Substation Equipment Replacement Project Open House*

**Please note this session will be recorded*



Moving forward together



Presenters

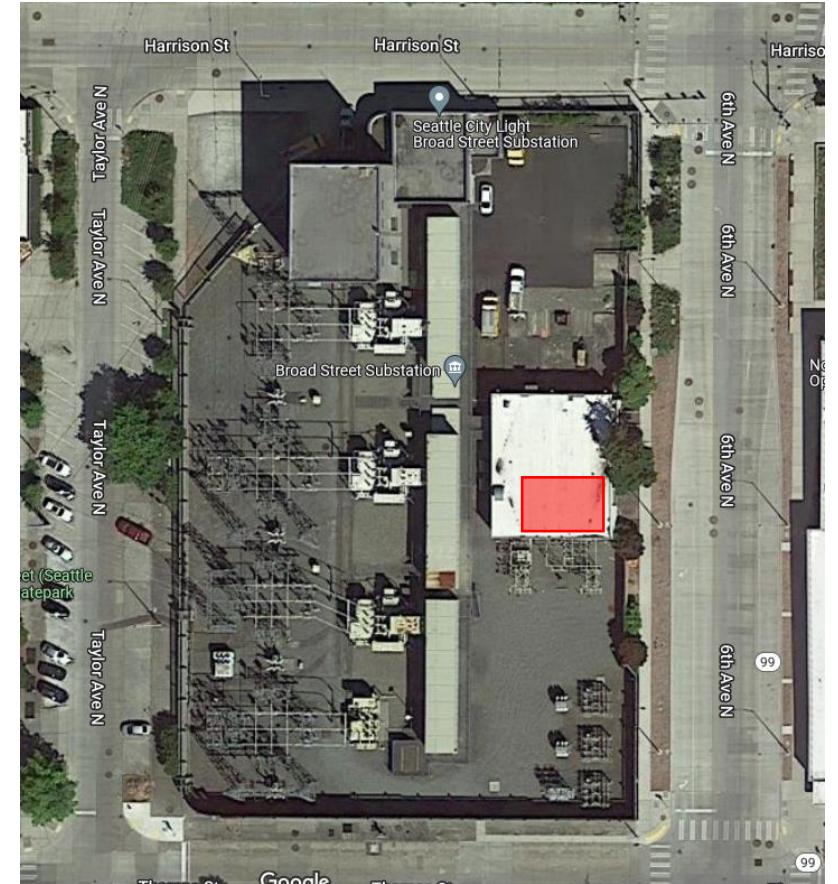
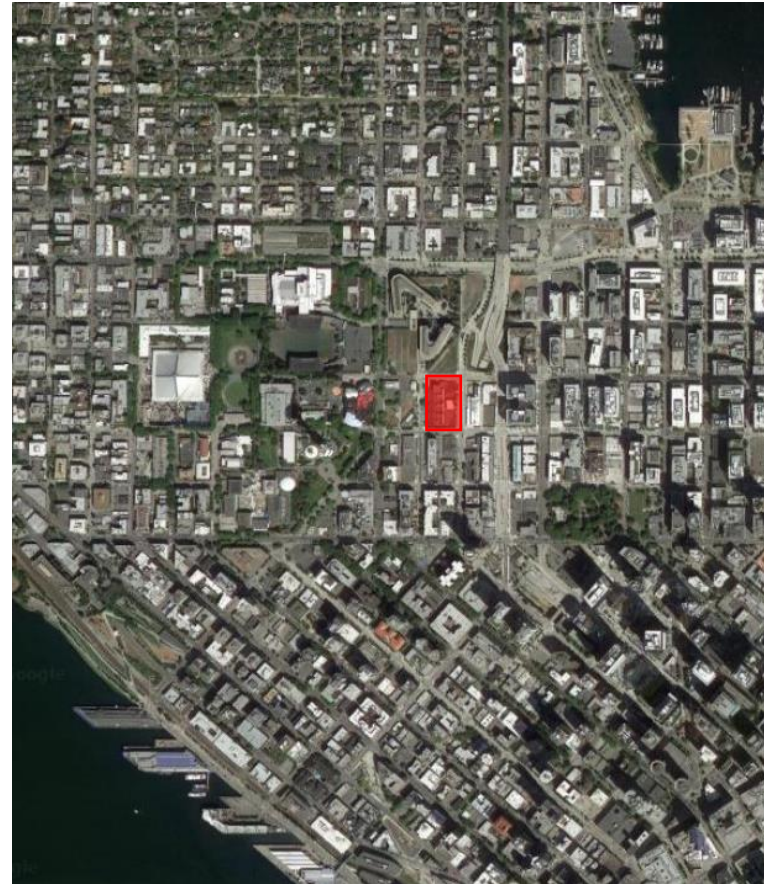
Randy Poplock, Project Manager King County Metro Transportation

Ted Bandy/Matt Gibbons, Gannett Fleming Engineering

Howard Hillinger/Michael Romero, Parametrix Consulting

**Please use the link in the chat to document your attendance*

Project Overview



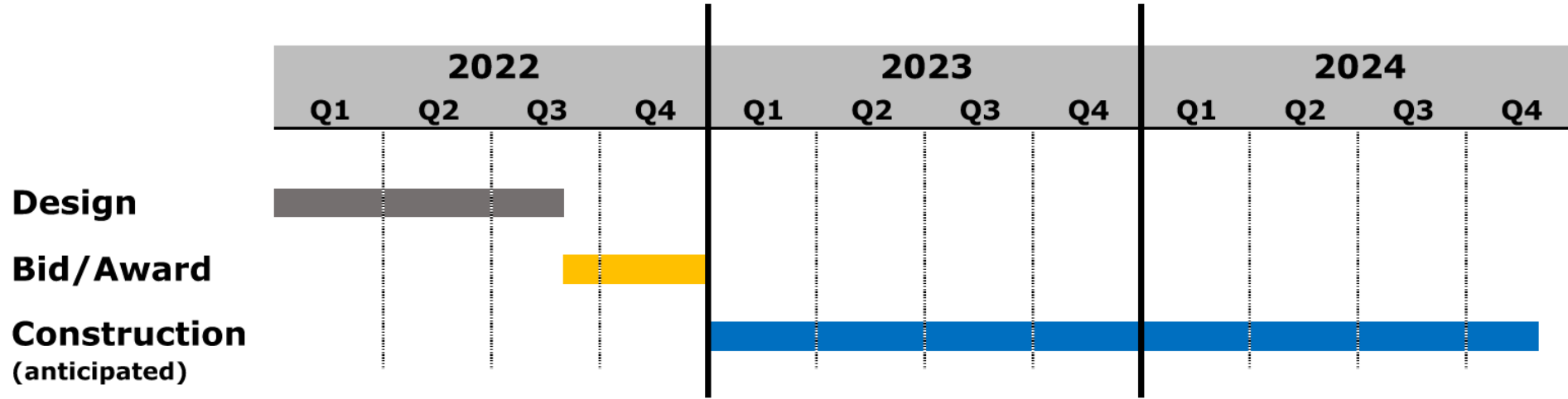


Project Overview

- Replace AC breakers, transformers, and rectifiers in Seattle City Light substation for trolley bus overhead lines
- Modify existing structure for new equipment weight
- Remove and replace one set of equipment at a time without interrupting the other
- Anticipated \$4.5 – 5.5 million construction contract value
- Design-bid-build delivery
- Currently at 90% design

**Broad Street Substation
Equipment Replacement Project**

Proposed Schedule



- Advertise Q3 2022
- NTP Q1 2023
- Construction – 20-24 months



Communication with the Construction Community

- King County Blog Post June 13, 2022: [Metro Matters](#)
- Email to NCAIS contractors
- Virtual open houses June 21-28
- Advertise for bids 3rd quarter 2022
- Contractor pre-bid walk-through early 4th Quarter 2022

**Broad Street Substation
Equipment Replacement Project**

Project Equity Goals

- ➔ This contract will have goals for apprentice and small business participation.
- ➔ To count towards the small business goal, firms must be certified by the Office of Minority and Women's Business Enterprises (OMWBE) as:
 - **Small Business Enterprise (SBE) or**
 - **Disadvantaged Business Enterprise (DBE)**
- ➔ To search for SBE firms and verify certification status go to:
 - <https://omwbe.wa.gov/directory-certified-firms>



For information about King County's small business and apprenticeship programs, visit:

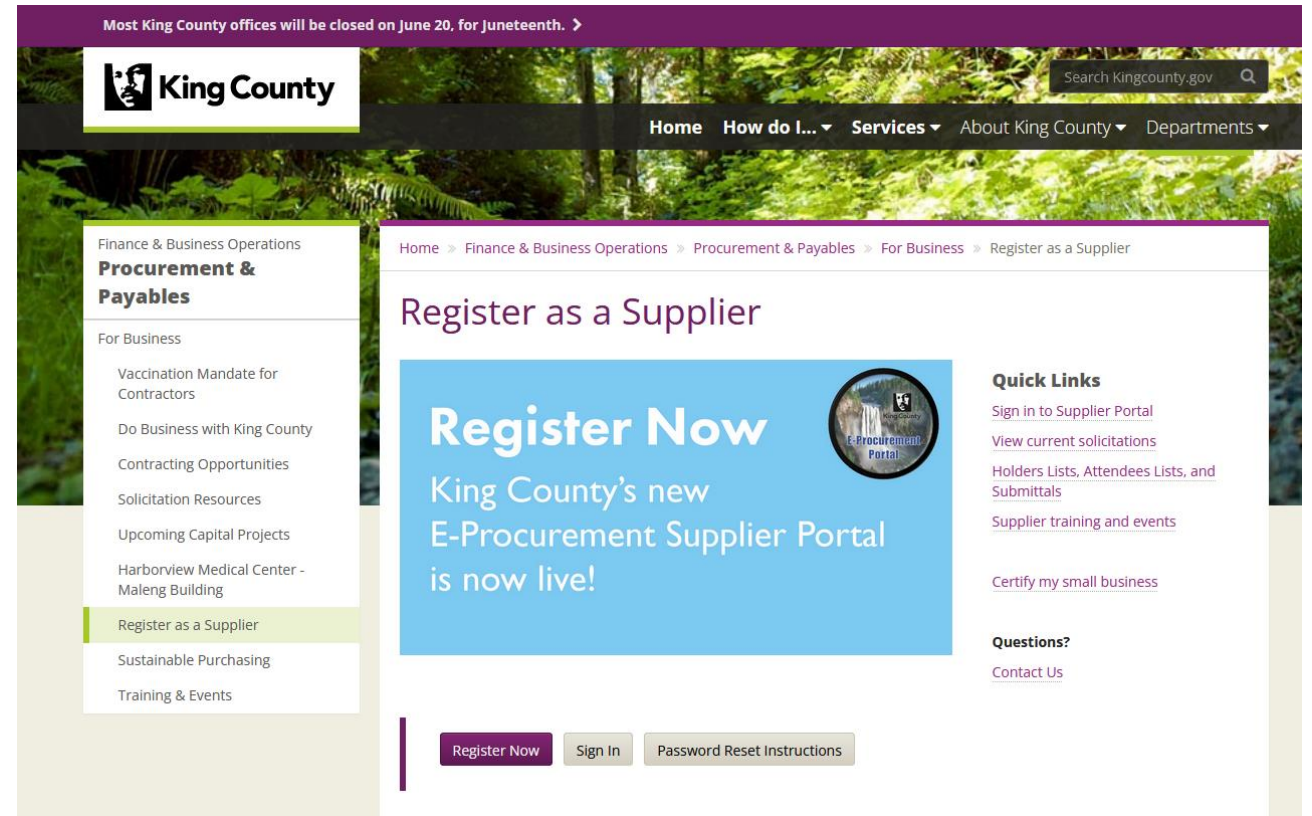
<https://kingcounty.gov/BDCC> or contact:

Laura Preftes, Lead Contract Specialist
laura.preftes@kingcounty.gov

Ellrol Gartrell, Apprenticeship Coordinator
egartrell@kingcounty.gov

King County Bidder Responsibility Criteria

- Mandatory registrations, licenses, and compliance with RCW's regarding public works and prevailing wage
- Contract and Regulatory History
- Criminal History
- Accident/Injury Experience
- Supplemental Bidder Responsibility Criteria for apparent low bidder



Most King County offices will be closed on June 20, for Juneteenth. >

King County

Home How do I... Services About King County Departments

Search Kingcounty.gov

Home > Finance & Business Operations > Procurement & Payables > For Business > Register as a Supplier

Register as a Supplier

Register Now
King County's new
E-Procurement Supplier Portal
is now live!

Quick Links

- [Sign in to Supplier Portal](#)
- [View current solicitations](#)
- [Holders Lists, Attendees Lists, and Submittals](#)
- [Supplier training and events](#)
- [Certify my small business](#)

Questions?

- [Contact Us](#)

[Register Now](#) [Sign In](#) [Password Reset Instructions](#)

<https://kingcounty.gov/depts/finance-business-operations/procurement/for-business/register.aspx>

Existing Conditions

- Portion of Building has KCM Substation Equipment on partially elevated 1st floor, and cable routing via basement (or within 1st floor slab).
- Access of all equipment deliveries envisioned via roll up door along 6th Ave. N.
- Replacement of two (2) transformer rectifier units are target for replacement that exist on 1st Floor. Each unit is rated 1.5MW, 700Vdc and each with 26.4kV incoming primary circuits.
- SCL has interface indications and protective trip cabling that will be updated/replaced.
- Present day transformer rectifier units have secondary ac breaker that will be replaced with a primary 26.4kV incoming breakers.
- Construction is to be staged to have one TR Unit in service at any time.

Proposed Work

- Structural reinforcement of the existing floor slab to accommodate new equipment. Fiberglass reinforcement is the method/materials to be installed under this project.
- Construction is to be staged to have one TR Unit in service at any time.
- Replacement two (2) transformer rectifier units with 12-pulse, 1.5MW, 700Vdc units.
- Incorporate new 26.4kV incoming primary circuit breakers.
- Replacement of all power/control/indication/alarm cabling from new/replacement equipment to existing infrastructure (Existing DC switchgear, RTU and SCL Equipment)

Feedback?

- Thoughts on schedule?
- Thoughts on equipment availability and lead times?
- Workability of the phasing plan?
- Questions about temporary jobsite controls, work near operating equipment?
- Reasonableness of proposed budget?
- Concerns about site access?
- Anything else you'd want to see to be able to bid the project?
- *Blog post reminder: [Metro Matters](#)*

**Please use the link in the chat to document your attendance*